

Wyse R Class thin computers

Best Power, Expandability and Display Performance

WYSE
R CLASS

for your data

your budgets

and your environment

Wyse R Class thin computers. All you need to know. Here



Introducing the Wyse R Class Thin Computers

The new Wyse R class thin computers cater for everything your users need from their desktop PCs. Without the things you don't. Like moving parts, wasted energy, insecure hard drives and excessive unnecessary heat.

Instead we've built in what matters the most to you: Powerful processors, dual monitor support, fast graphics and a host of USB ports for those vital everyday peripherals. Perfect when you need a client capable of voice, data, and video.



Wyse R00L

High Performance, slim form factor, Wyse WSM.



Wyse R50L

High Performance, slim form factor, SUSE Linux Enterprise.



Wyse R90L

High Performance, slim form factor, Windows XP embedded.



Wyse R00LE

Highest Performance, comprehensive expansion options, Wyse WSM.



Wyse R50LE

Highest Performance, comprehensive expansion options, SUSE Linux Enterprise.



Wyse R90LE

Highest Performance, comprehensive expansion options, Windows XP embedded.



Start

Models

Features

Technical

Print

WYSE
| | | |

Features

The new Wyse R Class Thin Computers

Created with power and performance in mind, the new Wyse R class joins the uniquely integrated range of Wyse Thin Computing hardware and software solutions.

The new Wyse R class features high performance central and graphics processors coupled with full support for multiple screens, and the best PC experience available on a thin computing platform with Wyse TCX Software.

Wyse Device Manager supports the Wyse R class with scalable enterprise-wide management including simple deployment, patching and updates and asset management - all with secure end-to-end encrypted communications.

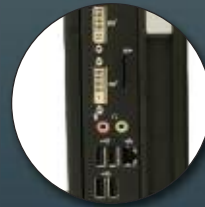
Finally, each and every Wyse R class thin computer contributes – quietly and coolly – to lowering your organization's carbon footprint, with power usage and emissions that are a fraction of traditional PC desktops.

Learn more. Simply click these Wyse R class feature icons:

Performance



L Family Connectivity



LE Family Connectivity



Mounting Options



Green



Provisioning Software



Management Software



Virtualization Software



Wyse Enhanced Suse Linux



Windows XPe



Visit: wyse.com

Take a tour of the Wyse R class range features here



Start

Models

Features

Technical

Print

WYSE
| | | |

Performance

High Performing central and graphics processors

By employing the advanced ATI 690E chipset from AMD the Wyse RL/LE-family of thin computers provides the best graphics performance in their class. With a maximum resolution of up to 2560x1600 on a single display (RL-family) or two displays (RLE-family) these devices will support any high-end graphics application.

AMD Sempron Processor



The advanced technology contained in this CPU from AMD lowers power consumption without compromising superior performance.

- AMD64 Technology
- PowerNow! technology
- HyperTransport technology
- Built to support Microsoft® Windows® XPe, as well as Linux.

AMD ATI 690E Vista Premium ready



The most powerful and highly optimized graphics engine in its class.

- Multiple display support
- Built-in support for Full DirectX 9.0
- 3D Acceleration Features
- Support for OpenGL
- Motion Video Acceleration Features (MPEG-2, MPEG-4 and WMV9)

The Wyse RL/LE-family of thin computers is designed to support dual monitors with standard 1 DVI-I and 1 DVI-D ports. In addition, Wyse RL/LE family of thin computers includes support for Pixel Shader 2.0, and is Vista Ultimate with Premium Aero GUI compliant which will be a requirement for running some of the latest forthcoming technologies from Citrix, Microsoft and VMware.



Continue tour



Start

Models

Features

Technical

Print

WYSE
| | | |

R Class L-Family Connectivity

Wyse R00L, R50L & R90L thin computers



Well connected

Wi-Fi aerial connector for optional 802.11 b/g/n and Bluetooth 2.0 connectivity

Two Serial ports
Two PS/2 ports

One DVI-I Port
One DVI-D Port

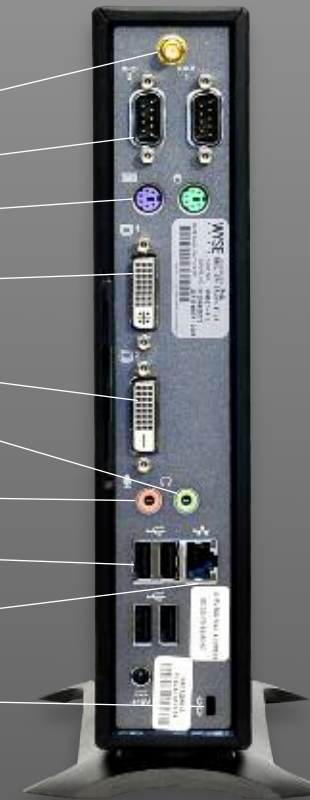
Audio Out: 1/8-inch mini, 16 bpp stereo
Internal mono speaker

Audio In: 1/8-inch mini,
8 bpp stereo microphone

Six External USB 2.0 ports
(2 front; 4 back)

10/100/1000 Base-T Gigabit Ethernet port

Kensington Lock Slot



Continue tour



Start

Models

Features

Technical

Print

WYSE
| | | |

R Class LE-Family Connectivity

Wyse R00LE, R50LE & R90LE thin computers



Well connected

Wi-Fi aerial connector for optional 802.11 b/g/n and Bluetooth 2.0 connectivity

One Parallel port

Two Serial ports

Two PS/2 ports

Kensington Lock Slot

One DVI-I Port

One DVI-D Port

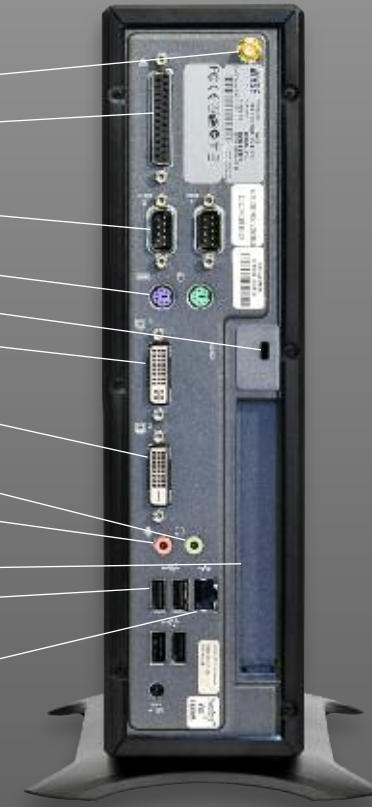
Audio Out: 1/8-inch mini, 16 bpp stereo
Internal mono speaker

Audio In: 1/8-inch mini, 8 bpp stereo microphone

One PCIe 1.1a x4 with x16 slot

Six External USB 2.0 ports
(2 front; 4 back)

10/100/1000 Base-T Gigabit Ethernet port



Continue tour



Start

Models

Features

Technical

Print

WYSE
| | | |

Mounting options

Vertical

- Wyse R class thin computers are supplied as standard with feet for vertical use.



Back of monitor or wall mounting

- An optional VESA mount bracket enables the Wyse R00L, R50L, and the R90L thin computers to be mounted on the back of a monitor (this requires the four industry standard mounting points to be free). The same bracket can be used for wall mounting, or in a secure or ruggedized cabinet if required.



Horizontal

- Optional feet enable Wyse R class thin computers to be used horizontally.

Continue tour



Start

Models

Features

Technical

Print

WYSE
| | |

Desktop computing Without compromise

That's Wyse
EarthSmart Computing



EarthSmart Computing™



Going Green with Wyse Thin Computing

Through our EarthSmart Computing initiative we are committed to helping organizations implement a greener computing strategy - one that delivers a more efficient and productive computing experience for your users with a positive effect on energy wastage, heat and carbon emissions.

Green Power

Wyse R class thin computers use between 12 and 15 watts of power in typical use. In comparison, a typical PC would use between 70 and 150 watts. Even in sleep mode R class units draw just 2 watts while being fully remotely managed.

Then, when you include additional power requirements in the data center, a thin computing deployment will deliver power savings of between 50 and 90%.

Continue tour



Start

Models

Features

Technical

Print

WYSE
| | |

Provisioning Software

Wyse WSM

Wyse WSM - automated provisioning for thin computing

Wyse WSM delivers software on demand by using independent OS and Application Streaming to zero-clients - like the Wyse R00L and the Wyse R00LE. This approach enables applications that don't work properly in the server environment to be executed on the client, while retaining centralized storage, management and control. This gives IT the manageability they want from a thin-computing infrastructure and the ability to deliver full, rich operating systems like Windows XP Professional.

Wyse WSM eliminates the need for traditional client management tasks, such as firmware upgrades, and patching and delivering new functionality to clients. Patches are done one-time at the server, and automatically deployed by Wyse WSM to clients upon a re-boot. No scripts or scheduling needed.

With the flexibility to deploy applications independent of the operating system, Wyse WSM allows customers to standardize operating system images across their organization and deliver applications based on user roles and responsibilities. Administrators can also easily provision new applications or updates to existing applications without having to modify the operating system image.



Continue tour



Start

Models

Features

Technical

Print

WYSE
| | | |

Management Software

Wyse Device Manager

Thin computing remote management. Made easy

Wyse Device Manager (WDM) provides comprehensive, enterprise-wide management for Wyse R class thin computers. A licence for WDM Workgroup Edition is included with every R class thin computer. This may be upgraded to WDM Enterprise Edition for an additional charge. **Key features include:**

Security

- HTTPS Based Imaging / Updates
- Fully Encrypted Network Traffic
- Multi-user Admin Access (MS AD) Support

No-Hassle Deployment

- Complete Device Imaging / Patching / Updates
- Bandwidth Throttling for Efficiency / Reliability
- Software Updates and Add-ons

Device Administration and Monitoring

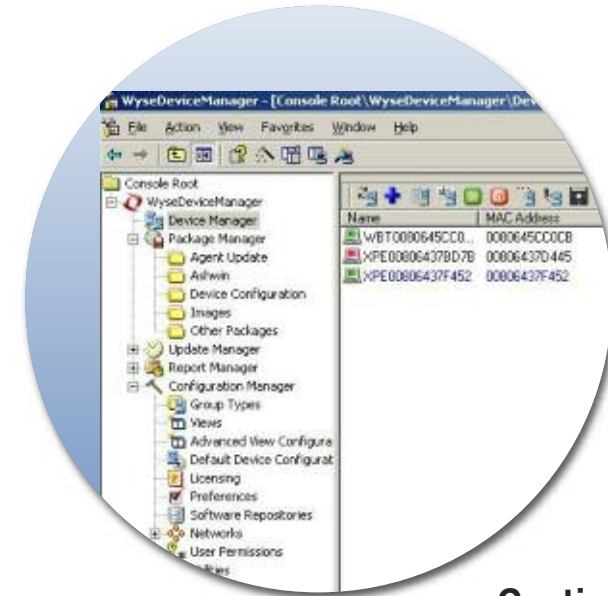
- Device Health Status / Reporting
- Remote Shadowing / Control
- Default Device Configuration

Scalability

- Distributed Architecture
- SQL / MSDE Support
- Multiple Remote Repository Support

Complete Asset Visibility

- Automated Discovery
- Detailed Hardware Asset information
- Installed Software Asset information.



Continue tour



Start

Models

Features

Technical

Print

WYSE
| | | |

Virtualization Software

Wyse TCX Software Suite with CPA (Collaborative Processing Architecture™)**

Wyse TCX Software Suite delivers an amazing user experience

TCX is Wyse's new software suite which enriches the user experience by removing previous limitations associated with thin clients. With Wyse TCX users receive the best PC experience available on a thin computing platform*. Wyse TCX software is sold separately.



Wyse TCX Multi-display

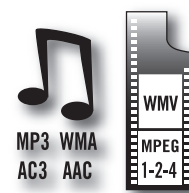
Ensures windows and dialog boxes behave in the way a user would expect when using more than one monitor.



Wyse TCX USB Virtualizer

Enables plug and play peripheral support for virtual desktop environments.

- Redirect and use local USB devices in virtual desktops.
- Deploy virtual desktops to knowledge workers with special device access needs.
- Enable a broad set of USB peripherals including webcams, headsets.



Wyse TCX Multimedia

Enables high performance multimedia for Citrix, Microsoft and VMware VDI environments.

- Accelerates Mpeg1, Mpeg2, WMV, Mpeg4 Part 2, AC3, AAC, MP3, WAV, WMA media types on ICA and RDP connections.
- CPA enhances server scalability by offloading multimedia rendering to the client.



Wyse TCX Rich Sound

Wyse TCX Rich Sound virtualization software enables virtual desktops and applications to receive and transmit high quality audio without compromise.

* At time of going to press, Wyse TCX Software Suite is not yet available for the R50L and R50LE thin computers running SUSE Linux Enterprise.

** For additional information on Collaborative Processing Architecture, please visit Wyse.com

Continue tour



Start

Models

Features

Technical

Print

WYSE
| | | |

Operating Systems

Wyse Enhanced SUSE Linux Enterprise

Wyse Enhanced SUSE Linux Enterprise is the industry's only enterprise-quality Linux operating system that combines the security, flexibility, and market-leading usability of SUSE Linux Enterprise from Novell with Wyse's thin computing optimizations in management and user experience.



The only enterprise-quality Linux
...that's optimized for thin computing



It is ideal for organizations who want to run server-based, web-based, or local applications (including legacy applications) without the deployment and security concerns of a non-standard Linux distribution.

Wyse Enhanced SUSE Linux Enterprise makes deploying Linux easier than any other thin-Linux distribution by allowing devices to auto-upgrade and be centrally configured without the need for management software—all that is needed is a simple FTP server and a single text-based configuration file. Should administrators desire asset tracking or more hands-on management, they can use Wyse Device Manager at no additional charge (Workgroup edition).

Additionally, with Wyse R50L & R50LE models and Wyse Enhanced SUSE Linux Enterprise, administrators can lock down applications, disable unnecessary configuration options, and provide read-only access capabilities to minimize data loss in case of theft, corruption, or virus attacks.

Continue tour



Start

Models

Features

Technical

Print

WYSE
| | |

Operating Systems

Windows XPe

Running Microsoft Windows XPe on Wyse thin computing devices gives IT departments the ability to deploy fully functional desktop computers with better manageability and significantly lower total cost of ownership than personal computers.



Wyse Windows XPe-based thin computers can run 32 bpp Windows applications, either locally or from servers located on the network. Additionally, when you deploy Microsoft Windows XPe on thin computers, you get the most flexibility to add and support peripherals and other add-ons.

By combining this robust operating system with firmware components, Wyse is able to reduce boot times and increase protection against viruses, trojan horses, and other malware. Giving you a more secure solution with the flexibility to add standard peripherals. Peripherals can only be connected with permission from the IT administrator.

Built for the next generation of Windows XP Embedded, Wyse R90L and R90LE thin computers are ready to support Windows Embedded Standard, providing users with access to advanced features such as RDP 6.1, Network Access Protections (NAP), Silverlight, Media Player 11 and .NET Framework 3.5.

Take the tour again



Start

Models

Features

Technical

Print

WYSE
| | |

Wyse Technology Inc.
3471 North First Street
San Jose, CA 95134-1801

Visit our website at:
<http://www.wyse.com>
Or send email to:
sales@wyse.com

Wyse Sales
800 GET WYSE
(800 438 9973)

**Wyse Customer
Service Center:**
800 800 WYSE
(800 800 9973)

©2008 The Wyse logo and Wyse are trademarks of Wyse Technology Inc. Other product names mentioned herein are for identification purposes only and may be trademarks and/or registered trademarks of their respective companies. Specifications subject to change without notice. Some features require support by server operating system and protocol. 11/08



Start

Models

Features

Technical

Print

WYSE
| | |

Technical

Wyse R Class Specifications

The Wyse R class family of thin computers is available in both L and LE configurations. Linux environments are catered for with Wyse Enhanced SUSE Linux. Windows environments are catered for with Windows XPe.

Learn more. Simply click the data sheets below:

Wyse R00L, R50L, R90L Thin Computers

Wyse R Class L-2 Family Specifications: R00L, R50L & R90L thin computers			
Hardware Specifications			
Processor	Intel® 80C 386 Processor	Display	VGSA monitor supported with Display Data Channel (DDC) for automatic monitor detection and selected size
Memory	Standard 1024K 30-pin DASH Maximum 65536K (4) DASH	Mouse	IBM PS/2 Mouse or any other Serial PS/2 Mouse 300 dpi In 18-pin serial, 500 dpi max
Optional equipment	One Disk 3.5" 1.44MB One 5.25" 5.25" 1.2MB Two 5.25" 1.2MB Two 5.25" 1.2MB Two 5.25" 1.2MB Two 5.25" 1.2MB	Audio	One 18-pin serial, 500 dpi max In 18-pin serial, 500 dpi max In 18-pin serial, 500 dpi max
		Power	Requires an external power supply, 500W or 600W, 100V AC
		Power consumption	Average 12.7 W
		Heat/dissipation	Requires a minimum clearance, 100mm, from other equipment
Installed	One Line Card One Line Card One Line Card One Line Card One Line Card One Line Card	Security	Requires Lock Slot
Graphics	IBM AT VGA VGA Monitor Ready VGA Monitor Ready VGA Monitor Ready VGA Monitor Ready VGA Monitor Ready	Temperature Range	Operating 5 to 40°C (41 to 104°F) Storage -20 to 60°C (-4 to 140°F)
	One 100-pin DASH Bus 1.2MB One 100-pin DASH Bus 1.2MB One 100-pin DASH Bus 1.2MB One 100-pin DASH Bus 1.2MB One 100-pin DASH Bus 1.2MB One 100-pin DASH Bus 1.2MB	Hardware Warranty	3 years limited hardware warranty

Wyse R00LE, R50LE, R90LE Thin Computers

[illegible]

Wyse Enhanced SUSE Linux Enterprise

Wyse Enhanced SUSE Linux Enterprise Software specifications			
Product Details	WSE Linux Enterprise 11 SP5 with Kernel 5.8	Product Support	SLA
	Compatible with SUSE Linux 15.4		WSP
	WSE Linux Enterprise (SUSE Linux 15.4 SP5)		WSP
	Available through WSE 11.0 SP5 WSP		WSP
Performance	Performance optimized	Management	WSP
	Optimized for VMware ESX		WSP
	Optimized for VMware ESX		WSP
	Optimized for VMware ESX		WSP
Security	WSE Linux Enterprise 11 SP5 with Kernel 5.8	Warranty	WSP
	WSE Linux Enterprise 11 SP5 with Kernel 5.8		WSP
	WSE Linux Enterprise 11 SP5 with Kernel 5.8		WSP
	WSE Linux Enterprise 11 SP5 with Kernel 5.8		WSP
System	WSE Linux Enterprise 11 SP5 with Kernel 5.8	Warranty	WSP
	WSE Linux Enterprise 11 SP5 with Kernel 5.8		WSP
	WSE Linux Enterprise 11 SP5 with Kernel 5.8		WSP
	WSE Linux Enterprise 11 SP5 with Kernel 5.8		WSP

Windows XPe

[illegible]

Visit: wyse.com



Start

Models

Features

Technical

Print

WYSE

Wyse R Class L-Family Specifications: R00L, R50L & R90L thin computers

Hardware specifications

Processor	1GHz AMD Sempron Processor	Display	VESA monitor support with Display Data Control (DDC) for automatic setting of resolution and refresh rate
Memory	Standard 1GB RAM / 1GB Flash		Dual monitor supported
	Maximum 2GB RAM / 4GB Flash		Single: 2560X1600 32 bpp 60Hz
I/O peripheral support	One DVI-I Port		Dual: 2560X1600 16 bpp 60Hz
	One DVI-D Port	Audio	Out: 1/8-inch mini, 16 bpp stereo. Internal Mono speaker.
	Two PS/2 ports		In: 1/8-inch mini, 8 bpp stereo microphone.
	Two serial ports	Power	Worldwide auto-sensing 100-240 VAC, 50/60 Hz 65W, 19V DC
	Six External USB 2.0 ports (2 front; 4 back)	Power consumption	Average 12.7 W
	One Mic In	Mountings	Vertical or Horizontal (optional), VESA mount.
	One Line Out	Security	Kensington Lock Slot
Included	Optical mouse and PS/2 keyboard	Dimensions	250mm x 225mm x 53mm (9.8 in. x 8.8 in. x 2.1 in.)
Graphics	AMD ATI 690E	Temperature Range	Horizontal position: 50 to 95 F (10 to 35 C)
	Vista Premium ready		Vertical position: 50 to 104 F (10 to 40 C)
Networking/Comm	10/100/1000 Base-T Gigabit Ethernet	Humidity	20% to 80%
	802.11 b/g/n and Bluetooth 2.0 (optional)	Hardware Warranty	3 years limited hardware warranty



Start

Models

Features

Technical

Print



Wyse R Class LE-Family Specifications: R00LE, 50LE & R90LE thin computers

Hardware specifications

Processor	1.5 GHz AMD Sempron Processor	Display	VESA monitor support with Display Data Control (DDC) for automatic setting of resolution and refresh rate
Memory	Standard		Dual monitor supported
	1GB RAM / 1GB Flash		
	Maximum		
	2GB RAM / 4GB Flash		
I/O peripheral support	One DVI-I Port	Audio	Out: 1/8-inch mini, 16 bpp stereo. Internal Mono speaker
	One DVI-D Port		In: 1/8-inch mini, 8 bpp stereo microphone
	Two PS/2 ports	Power	Worldwide auto-sensing 100-240 VAC, 50/60 Hz 65W, 19V DC
	Two serial ports		
	Six External USB 2.0 ports (2 front; 4 back)	Power consumption	Average: 14.1 W
	Four Internal USB 2.0 ports	Mountings	Vertical or Horizontal (optional), VESA mount
	One Mic In	Security	Kensington Lock Slot
	One Line Out	Dimensions	307mm x 225mm x 82mm (12.1 in. x 8.8 in. x 3.2 in.)
	One Parallel port	Temperature Range	Horizontal position: 50 to 95 F (10 to 35 C)
			Vertical position: 50 to 104 F (10 to 40 C)
Expansion	One PCIe 1.1a x4 with x16 slot, half card length, full height	Humidity	20% to 80%
Included	Optical mouse and PS/2 keyboard	Hardware Warranty	3 years limited hardware warranty
Graphics	AMD ATI 690E		
	Vista Premium ready		
Networking/Comm	10/100/1000 Base-T Gigabit Ethernet		
	802.11 b/g/n and Bluetooth 2.0 (optional)		



Start

Models

Features

Technical

Print

WYSE
| | | |

Wyse Enhanced SUSE Linux Enterprise

Software specifications

Firmware features	SUSE Linux Enterprise 10 SP2 with Kernel 2.6 Compatible with SLED 10 SP2 Add-ons Automatic Central Configuration (text-based INI files) Automatic Upgrades (FTP, HTTP, HTTPS) Firefox browser standard Compressed read-only file system CUPS, LPR/LPD, Ghostscript and Samba print support for DeskJet and LaserJet Citrix ICA 10.X client RDESKTOP client X11R6-compliant X-Window XDMCP Ericom PowerTerm® Terminal Emulation	Protocol Support	ICA RDP PPP IP NFS NTP DHCP PXE SNMP SSH
Server OS Compatibility/Support	Citrix XenDesktop Citrix XenApp (formerly Citrix Presentation Server) VMware VDM UNIX/Linux servers Windows Server 2000 Windows Server 2003	Management	Remote management with Wyse WDM: Complete image upgrade Wake terminal remotely (Wake-on LAN) Terminal configuration (IP information, name, etc.) Remote screen shadowing of entire desktop (VNC) Asset management and Reporting
Keyboard language support	English, German, Spanish, French, Italian, Dutch, Chinese, Japanese, Turkish	Wireless support	802.1x Support Supports wireless adapters from: Cisco, D-Link, Netgear Internal Wi-Fi WPA2 supplicant support: WEP40, WEP128, Internal Wi-Fi support: WEP, WPA-PSK (TKIP), WPA2-PSK (CCMP), WPA-EAP, WPA2-EAP



Start

Models

Features

Technical

Print



Wyse Enhanced Microsoft Windows XPe

Software specifications

Firmware features	Microsoft Windows XPe Microsoft Internet Explorer 6.0 resident: HTML, JavaScript, XML, Active X Sun JRE, Media Player, Citrix Web Interface RDP 6.0 resident Citrix ICA 10.250 resident Terminal Services Advanced Client (TSAC) RDESKTOP client X11R6-compliant X-Windows XDMCP Ericom PowerTerm® Terminal Emulation provides 30-plus terminal emulations	Management	Remote management, configuration, and upgrades through Wyse Device Manager Complete image upgrade Wake terminal remotely (Wake-on LAN) Terminal configuration (IP information, name, etc.) Remote screen shadowing of entire desktop (Wyse Remote Shadow) Reporting, Asset management SMS Altiris CA Unicenter NSM (requires Wyse Device Manager Enterprise Edition) IBM Tivoli NetView (requires Wyse Device Manager Enterprise Edition)
Server OS Compatibility/Support	Citrix XenDesktop Citrix XenApp (formerly Citrix Presentation Server) Windows NT Server 4.0 Server, Terminal Server Edition Windows 2000 Server Windows 2003 Server	Wireless support	Optional 802.11b/g/n and Bluetooth 2.0 support with wireless adapter WPA-2, WEP, WPA wireless authentication PEAP-GTC wireless authentication protocol with optional Juniper Odyssey Client Supports PC-Card wireless adapters from: Cisco, D-Link, Netgear, US Robotics, Trendware
Set-up and Configuration	Boot from local flash Windows XP user interface languages: U.S. English, French, German, Spanish, Optional add-ons	Security Plug-ins	CA eTrust Antivirus Adobe Acrobat Reader Adobe Flash Player Adobe Shockwave
Keyboard language support	U.S. English (standard), French, German, Spanish, U.K. English, 40 other languages included		
Protocol Support	TCP/IP, DNS, DHCP, PXE		



Start

Models

Features

Technical

Print

WYSE
| | | |

Wyse R Class Thin Computers

Best Power, Expandability and Display Performance

WYSE
| | | |

Fact sheet

Introducing the Wyse R Class Thin Computers

The new Wyse R class thin computers cater for everything your users need from their desktop PCs. Without the things you don't. Like moving parts, wasted energy, insecure hard drives and excessive unnecessary heat.

Instead we've built in what matters the most to you: powerful processors, dual monitor support, fast graphics and a host of USB ports for those vital everyday peripherals. Perfect when you need a client capable of voice, data, and video.

Wyse R00L

High Performance,
slim form factor,
Wyse WSM



Wyse R00LE

Highest Performance,
comprehensive expansion
options, Wyse WSM.



Wyse R50L

High Performance,
slim form factor,
SUSE Linux Enterprise.



Wyse R50LE

Highest Performance,
comprehensive expansion
options, SUSE Linux
Enterprise.



Wyse R90L

High Performance,
slim form factor,
Windows XP embedded.



Wyse R90LE

Highest Performance,
comprehensive expansion
options, Windows XP
embedded.



Wyse R Class Thin Computers

Best Power, Expandability and Display Performance

The Wyse logo is located in the top right corner. It consists of the word "WYSE" in a bold, white, sans-serif font, with three small vertical bars positioned below each letter. The logo is set against a solid black rectangular background.

Fact sheet

Features

Created with power and performance in mind, the new Wyse R class joins the uniquely integrated range of Wyse Thin Computing hardware and software solutions.

The new Wyse R class features high performance central and graphics processors, coupled with full support for multiple screens, and the best PC experience available on a thin computing platform with Wyse TCX Software.

Wyse Device Manager supports the Wyse R class with scalable enterprise-wide management including simple deployment, patching and updates and asset management - all with secure end-to-end encrypted communications.

Finally, each and every Wyse R class thin computer contributes – quietly and coolly – to lowering your organization's carbon footprint, with power usage and emissions that are a fraction of traditional PC desktops.

Performance

High Performing central and graphics processors

By employing the advanced ATI 690E chipset from AMD the Wyse RL/LE-family of thin computers provides the best graphics performance in their class. With a maximum resolution of up to 2560x1600 on a single display (RL-family) or two displays (RLE-family) these devices will support any high-end graphics application.

The Wyse RL/LE-family of thin computers is designed to support dual monitors with standard 1 DVI-I and 1 DVI-D ports. In addition, Wyse RL/LE family of thin computers includes support for Pixel Shader 2.0, and is Vista Ultimate with Premium Aero GUI compliant which will be a requirement for running some of the latest forthcoming technologies from Citrix, Microsoft and VMware.

AMD Sempron Processor

The advanced technology contained in this CPU from AMD lowers power consumption without compromising superior performance.

- AMD64 Technology

Wyse R Class Thin Computers

Best Power, Expandability and Display Performance

The Wyse logo is located in the top right corner. It consists of the word "WYSE" in a bold, white, sans-serif font, with three small vertical bars positioned below each letter. The logo is set against a black rectangular background.

Fact sheet

- PowerNow! technology
- HyperTransport technology
- Built to support Microsoft® Windows® XPe, as well as Linux.

AMD ATI 690E

Vista Premium ready

The most powerful and highly optimized graphics engine in its class.

- Multiple display support
- Built-in support for Full DirectX 9.0
- 3D Acceleration Features
- Support for OpenGL
- Motion Video Acceleration Features (MPEG-2, MPEG-4 and WMV9)

Mounting options

Vertical

Wyse R class thin computers are supplied as standard with feet for vertical use.

Back of monitor or wall mounting

An optional VESA mount bracket enables the Wyse R00L, R50L, and the R90L thin computers to be mounted on the back of a monitor (this requires the four industry standard mounting points to be free). The same bracket can be used for wall mounting, or in a secure or ruggedized cabinet if required.

Horizontal

Optional feet enable Wyse R class thin computers to be used horizontally.

Wyse R Class Thin Computers

Best Power, Expandability and Display Performance

The Wyse logo is located in the top right corner. It consists of the word "WYSE" in a bold, white, sans-serif font, with three small vertical bars positioned below each letter. The logo is set against a solid black rectangular background.

Fact sheet

EarthSmart

Going Green with Wyse Thin Computing

Through our EarthSmart Computing initiative we are committed to helping organisations implement a greener computing strategy - one that delivers a more efficient and productive computing experience for your users with a positive effect on energy wastage, heat and carbon emissions.

Green Power

Wyse R class thin computers use between 12 and 15 watts of power in typical use. In comparison, a typical PC would use between 70 and 150 watts. Even in sleep mode R class units draw just 2 watts while being fully remotely managed.

Then, when you include additional power requirements in the data center, a thin computing deployment will deliver power savings of between 50 and 90%.

Provisioning Software

Wyse WSM

Wyse WSM - automated provisioning for thin computing

Wyse WSM delivers software on demand by using independent OS and Application Streaming to zero-clients - like the Wyse R00L and the Wyse R00LE. This approach enables applications that don't work properly in the server environment to be executed on the client, while retaining centralized storage, management and control. This gives IT the manageability they want from a thin-computing infrastructure and the ability to deliver full, rich operating systems like Windows XP Professional.

Wyse WSM eliminates the need for traditional client management tasks, such as firmware upgrades, and patching and delivering new functionality to clients. Patches are done one-time at the server, and automatically deployed by Wyse WSM to clients upon a re-boot. No scripts or scheduling needed.

Wyse R Class Thin Computers

Best Power, Expandability and Display Performance

The Wyse logo is located in the top right corner. It consists of the word "WYSE" in a bold, white, sans-serif font, with four small vertical bars positioned below each letter. The logo is set against a solid black rectangular background.

Fact sheet

With the flexibility to deploy applications independent of the operating system, Wyse WSM allows customers to standardize operating system images across their organization and deliver applications based on user roles and responsibilities. Administrators can also easily provision new applications or updates to existing applications without having to modify the operating system image.

Management Software

Wyse Device Manager

Thin computing remote management. Made easy

Wyse Device Manager (WDM) provides comprehensive, enterprise-wide management for Wyse R class thin computers.

A licence for WDM Workgroup Edition is included with every R class thin computer. This may be upgraded to WDM Enterprise Edition for an additional charge. Key features include:

Security

- HTTPS Based Imaging / Updates
- Fully Encrypted Network Traffic
- Multi-user Admin Access (MS AD) Support

No-Hassle Deployment

- Complete Device Imaging / Patching / Updates
- Bandwidth Throttling for Efficiency / Reliability
- Software Updates and Add-ons

Device Administration and Monitoring

- Device Health Status / Reporting
- Remote Shadowing / Control

Wyse R Class Thin Computers

Best Power, Expandability and Display Performance

The Wyse logo is located in the top right corner. It consists of the word "WYSE" in a bold, white, sans-serif font, with four small vertical bars positioned below each letter. The logo is set against a solid black rectangular background.

Fact sheet

- Default Device Configuration

Scalability

- Distributed Architecture
- SQL / MSDE Support
- Multiple Remote Repository Support

Complete Asset Visibility

- Automated Discovery
- Detailed Hardware Asset information
- Installed Software Asset information.

Virtualization Software

Wyse TCX™ Software Suite with CPA (Collaborative Processing Architecture™)**

Wyse TCX Software Suite delivers an amazing user experience

TCX is Wyse's new software suite which enriches the user experience by removing previous limitations associated with thin clients. With Wyse TCX users receive the best PC experience available on a thin computing platform*. Wyse TCX software is sold separately.

*At time of going to press, Wyse TCX Software Suite is not yet available for the R50L and R50LE thin computers running SUSE Linux Enterprise.

** For additional information on Collaborative Processing Architecture, please visit Wyse.com

Wyse TCX Multi-display

Ensures windows and dialog boxes behave in the way a user would expect when using more than one monitor.

Wyse TCX USB Virtualizer

Enables plug and play peripheral support for virtual desktop environments.

- Redirect and use local USB devices in virtual desktops.
- Deploy virtual desktops to knowledge workers with special device access needs.

Wyse R Class Thin Computers

Best Power, Expandability and Display Performance

The Wyse logo is located in the top right corner. It consists of the word "WYSE" in a bold, white, sans-serif font, with four small vertical bars positioned below each letter. The logo is set against a solid black rectangular background.

Fact sheet

- Enable a broad set of USB peripherals including webcams, headsets.

Wyse TCX Multimedia

Enables high performance multimedia for Citrix, Microsoft and VMware VDI environments.

- Accelerates Mpeg1, Mpeg2, WMV, Mpeg4 Part 2, AC3, AAC, MP3, WAV, WMA media types on ICA and RDP connections.
- CPA enhances server scalability by offloading multimedia rendering to the client.

Wyse TCX Rich Sound

Wyse TCX Rich Sound virtualization software enables virtual desktops and applications to receive and transmit high quality audio without compromise.

Operating Systems

Wyse Enhanced SUSE Linux Enterprise

Wyse Enhanced SUSE Linux Enterprise is the industry's only enterprise-quality Linux operating system that combines the security, flexibility, and market-leading usability of SUSE Linux Enterprise from Novell with Wyse's thin computing optimizations in management and user experience.

It is ideal for organizations who want to run server-based, web-based, or local applications (including legacy applications) without the deployment and security concerns of a non-standard Linux distribution.

Wyse Enhanced SUSE Linux Enterprise makes deploying Linux easier than any other thin-Linux distribution by allowing devices to auto-upgrade and be centrally configured without the need for management software—all that is needed is a simple FTP server and a single text-based configuration file. Should administrators desire asset tracking or more hands-on management, they can use Wyse Device Manager at no additional charge (Workgroup edition).

Wyse R Class Thin Computers

Best Power, Expandability and Display Performance

The Wyse logo is located in the top right corner. It consists of the word "WYSE" in a bold, white, sans-serif font, with four small vertical bars positioned below each letter. The logo is set against a black rectangular background.

Fact sheet

Additionally, with Wyse R50L & R50LE models and Wyse Enhanced SUSE Linux Enterprise, administrators can lock down applications, disable unnecessary configuration options, and provide read-only access capabilities to minimize data loss in case of theft, corruption, or virus attacks.

Operating Systems

Windows XPe

Running Microsoft Windows XPe on Wyse thin computing devices gives IT departments the ability to deploy fully functional desktop computers with better manageability and significantly lower total cost of ownership than personal computers.

Wyse Windows XPe-based thin computers can run 32 bpp Windows applications, either locally or from servers located on the network. Additionally, when you deploy Microsoft Windows XPe on thin computers, you get the most flexibility to add and support peripherals and other add-ons.

By combining this robust operating system with firmware components, Wyse is able to reduce boot times and increase protection against viruses, trojan horses, and other malware. Giving you a more secure solution with the flexibility to add standard peripherals. Peripherals can only be connected with permission from the IT administrator.

Built for the next generation of Windows XP Embedded, Wyse R90L and R90LE thin computers are ready to support Windows Embedded Standard, providing users with access to advanced features such as RDP 6.1, Network Access Protections (NAP), Silverlight, Media Player 11 and .NET Framework 3.5.

Wyse R Class Thin Computers

Best Power, Expandability and Display Performance

WYSE
| | | |

Fact sheet

Hardware Specifications

Wyse R Class L-Family Specifications: R00L, R50L & R90L thin computers

Processor 1GHz AMD Sempron Processor

Memory Standard

1GB RAM / 1GB Flash

Maximum

2GB RAM / 4GB Flash

I/O peripheral support

One DVI-I Port

One DVI-D Port

Two PS/2 ports

Two serial ports

Six External USB 2.0 ports (2 front; 4 back)

One Mic In

One Line Out

Included Optical mouse and PS/2 keyboard

Graphics AMD ATI 690E

Vista Premium ready

Networking/Comm 10/100/1000 Base-T Gigabit Ethernet

802.11 b/g/n and Bluetooth 2.0 (optional)

Display VESA monitor support with Display Data Control (DDC) for automatic setting of resolution and refresh rate

Dual monitor supported

Single: 2560X1600 32 bpp 60Hz

Dual: 2560X1600 16 bpp 60Hz

Dual: 1920X1200 32 bpp 60Hz

Audio Out: 1/8-inch mini, 16 bpp stereo. Internal Mono speaker.

In: 1/8-inch mini, 8 bpp stereo microphone.

Wyse R Class Thin Computers

Best Power, Expandability and Display Performance

The Wyse logo consists of the word "WYSE" in a bold, white, sans-serif font, with four small vertical bars positioned below each letter.

Fact sheet

Power	Worldwide auto-sensing 100-240 VAC, 50/60 Hz 65W, 19V DC
Power consumption	Average 12.7 W
Mountings	Vertical or Horizontal (optional), VESA mount.
Security	Kensington Lock Slot
Dimensions	250mm x 225mm x 53mm (9.8 in. x 8.8 in. x 2.1 in.)
Temperature Range	Horizontal position: 50 to 95 F (10 to 35 C) Vertical position: 50 to 104 F (10 to 40 C)
Humidity	20% to 80%
Hardware Warranty	3 years limited hardware warranty

Hardware Specifications

Wyse R Class LE-Family Specifications: R00L, 50LE & R90LE thin computers

Processor	1.5 GHz AMD Sempron Processor
Memory	Standard 1GB RAM / 1GB Flash Maximum 2GB RAM / 4GB Flash
I/O peripheral support	One DVI-I Port One DVI-D Port Two PS/2 ports Two serial ports Six External USB 2.0 ports (2 front; 4 back) One Mic In One Line Out One Parallel port
Expansion	One PCIe 1.1a x4 with x16 slot, half card length, full height
Included	Optical mouse and PS/2 keyboard

Wyse R Class Thin Computers

Best Power, Expandability and Display Performance

The Wyse logo consists of the word "WYSE" in a bold, white, sans-serif font, with four small vertical bars positioned below each letter.

Fact sheet

Graphics	AMD ATI 690E Vista Premium ready
Networking/Comm	10/100/1000 Base-T Gigabit Ethernet 802.11 b/g/n and Bluetooth 2.0 (optional)
Display	VESA monitor support with Display Data Control (DDC) for automatic setting of resolution and refresh rate Dual monitor supported Single: 2560X1600 bpp 60Hz Dual: 2560X1600 32 bpp 60Hz
Audio	Out: 1/8-inch mini, 16 bpp stereo. Internal Mono speaker. In: 1/8-inch mini, 8 bpp stereo microphone.
Power	Worldwide auto-sensing 100-240 VAC, 50/60 Hz 65W, 19V DC
Power consumption	Average: 14.1 W
Mountings	Vertical or Horizontal (optional), VESA mount.
Security	Kensington Lock Slot
Dimensions	307mm x 225mm x 82mm (12.1 in. x 8.8 in. x 3.2 in.)
Temperature Range	Horizontal position: 50 to 95 F (10 to 35 C) Vertical position: 50 to 104 F (10 to 40 C)
Humidity	20% to 80%
Hardware Warranty	3 years limited hardware warranty

Wyse R Class Thin Computers

Best Power, Expandability and Display Performance

The Wyse logo is located in the top right corner. It consists of the word "WYSE" in a bold, white, sans-serif font, with four small vertical bars positioned below each letter. The logo is set against a solid black rectangular background.

Fact sheet

Software Specifications

Wyse Enhanced SUSE Linux Enterprise

Firmware features

- SUSE Linux Enterprise 10 SP2 with Kernel 2.6
- Compatible with SLED 10 SP2 Add-ons
- Automatic Central Configuration (text-based INI files)
- Automatic Upgrades (FTP, HTTP, HTTPS)
- Firefox browser standard
- Compressed read-only file system
- CUPS, LPR/LPD, Ghostscript and Samba print support for DeskJet and LaserJet
- Citrix ICA 10.X client
- RDESKTOP client
- X11R6-compliant X-Window
- XDMCP
- Ericom PowerTerm® Terminal Emulation

Server OS

Compatibility/Support

- Citrix XenDesktop
- Citrix XenApp (formerly Citrix Presentation Server)
- VMware VDM
- UNIX/Linux servers
- Windows Server 2000
- Windows Server 2003

Keyboard language support:

- English, German, Spanish, French, Italian, Dutch, Chinese, Japanese, Turkish

Wyse R Class Thin Computers

Best Power, Expandability and Display Performance

The Wyse logo is located in the top right corner. It consists of the word "WYSE" in a bold, white, sans-serif font, with four small vertical bars positioned below each letter. The logo is set against a solid black rectangular background.

Fact sheet

Protocol Support

- ICA
- RDP
- PPP
- IP
- NFS
- NTP
- DHCP
- PXE
- SNMP
- SSH

Management

Remote management with Wyse WDM:

- Complete image upgrade
- Wake terminal remotely (Wake-on LAN)
- Terminal configuration (IP information, name, etc.)
- Remote screen shadowing of entire desktop (VNC)
- Asset management and Reporting

Wireless support

- 802.1x Support
- Supports wireless adapters from: Cisco, D-Link, Netgear
- Internal Wi-Fi WPA2 supplicant support: WEP40, WEP128,
- Internal Wi-Fi support: WEP, WPA-PSK (TKIP), WPA2-PSK (CCMP),
- WPA-EAP, WPA2-EAP

Wyse R Class Thin Computers

Best Power, Expandability and Display Performance

The Wyse logo consists of the word "WYSE" in a bold, white, sans-serif font, with three small vertical bars positioned below each letter. The logo is set against a solid black rectangular background.

Fact sheet

Software Specifications

Wyse Enhanced Microsoft Windows XPe

Firmware features

- Microsoft Windows XPe
- Microsoft Internet Explorer 6.0 resident: HTML, JavaScript, XML, Active X Sun JRE, Media Player, Citrix Web Interface
- RDP 6.0 resident
- Citrix ICA 10.250 resident
- Terminal Services Advanced Client (TSAC)
- RDESKTOP client
- X11R6-compliant X-Windows
- XDMCP
- Ericom PowerTerm® Terminal Emulation provides 30-plus terminal emulations

Server OS

Compatibility/Support

- Citrix XenDesktop
- Citrix XenApp (formerly Citrix Presentation Server)
- Windows NT Server 4.0 Server, Terminal Server Edition
- Windows 2000 Server
- Windows 2003 Server

Set-up and Configuration

Boot from local flash

- Windows XP user interface languages: U.S. English, French, German, Spanish, Optional add-ons

Wyse R Class Thin Computers

Best Power, Expandability and Display Performance

The Wyse logo is located in the top right corner. It consists of the word "WYSE" in a bold, white, sans-serif font, with four small vertical bars positioned below each letter. The logo is set against a solid black rectangular background.

Fact sheet

Keyboard language support

U.S. English (standard), French, German, Spanish, U.K. English, 40 other languages included

Protocol Support

TCP/IP, DNS, DHCP, PXE

Management

Remote management, configuration, and upgrades through Wyse Device Manager

Complete image upgrade

Wake terminal remotely (Wake-on LAN)

Terminal configuration (IP information, name, etc.)

Remote screen shadowing of entire desktop

(Wyse Remote Shadow)

Reporting, Asset management

SMS

Altiris

CA Unicenter NSM (requires Wyse Device Manager Enterprise Edition)

IBM Tivoli NetView (requires Wyse Device Manager Enterprise Edition)

Wireless support

Optional 802.11b/g/n and Bluetooth 2.0 support with wireless adapter

WPA-2, WEP, WPA wireless authentication

PEAP-GTC wireless authentication protocol with optional

Juniper Odyssey Client

Supports PC-Card wireless adapters from: Cisco, D-Link, Netgear,

US Robotics, Trendware

Wyse R Class Thin Computers

Best Power, Expandability and Display Performance



Fact sheet

Security CA eTrust Antivirus

Plug-ins Adobe Acrobat Reader
Adobe Flash Player
Adobe Shockwave

Wyse Technology Inc.
3471 North First Street
San Jose, CA 95134-1801

Visit our website at:
<http://www.wyse.com>
Or send email to:
sales@wyse.com

Wyse Sales
800 GET WYSE
(800 438 9973)

Wyse Customer
Service Center:
800 800 WYSE
(800 800 9973)

©2008 The Wyse logo and Wyse are trademarks of Wyse Technology Inc. Other product names mentioned herein are for identification purposes only and may be trademarks and/or registered trademarks of their respective companies. Specifications subject to change without notice. Some features require support by server operating system and protocol. 11/08